

## **APPENDICES**

to the University Senate Faculty Affairs and Personnel Committee  
*Report and Recommendation on Contingent Faculty Proposal (S-0705)*

### **APPENDIX I: (13 pages)**

AAUP Proposal: Teaching at Rutgers: A Proposal to Convert Part-time to Full-time Appointments and Instructional Full-time Non-tenure track Appointments to Tenure Track Appointments

Appendices to AAUP Proposal (9 pages)

Appendix A

Appendix B

Appendix C

Appendix D

Appendix E

Appendix F

### **APPENDIX II: (1 page)**

Departments that employ more than 10 PTLs

### **APPENDIX III: (4 pages)**

New Brunswick Faculty Council Personnel Policy Committee:  
Report on the charge on numbers and trends of different faculty cohorts

Zoran Gajic  
Karen Thompson  
Richard Moser

**Teaching at Rutgers:  
A Proposal to Convert Part-time to Full-time Appointments and  
Instructional Full-time Non-tenure track Appointments to Tenure Track  
Appointments**

**Abstract**

The overuse of contingent faculty threatens Rutgers' status and prestige while weakening undergraduate education by institutionalizing disincentives to excellence. Reducing contingency and professionalizing instruction will enhance the academic community at Rutgers, help build our endowment, lift our ranking, and attract and retain the most qualified teachers and students. The conversion of part-time to full-time positions and the conversion of non-tenure track positions to a teaching tenure track are wise and practical investments that will help Rutgers and New Jersey realize significant benefits at a modest cost.

**Table of Contents**

A. Introduction

B. Reducing Contingency and Professionalizing Instruction Will Enhance Undergraduate Education at Rutgers

C. Reducing Contingency May Also Help to Build our Endowment and Slow the Loss of Potential Students Through Out-migration and Attrition

D. The (Re)Balancing Act

1. Establish a Full-time Teaching Tenure Track

2. Convert Part-time Appointments to Full-time

E. Benefits of Conversion to the University

F. Costs

1. The Costs of Converting Part-time Appointments to Full-time (assuming a base salary of \$50,000) is Largely Self-funding.

2. The Cost of Converting Full-time Non-Tenure Track Faculty to a Teaching Tenure Track is Modest and a Sound Investment in Rutgers.

3. Additional Cost Benefit Analysis of Conversion Proposal (See Appendix F)

Appendix A  
The Decline of Tenure at Rutgers

Appendix B  
Endowments for U.S. Public Schools Ranked in the Top 60

Appendix C  
Best Practices and Policy Initiatives Relating to the Conversion of Instructional Faculty

Appendix D  
How the Proposal to Convert Contingent Appointments Benefits Rutgers and New Jersey

Appendix E  
Costs of Conversion Programs at CSU and WMU

Appendix F  
Economic Benefits Results

## **Teaching at Rutgers: A Proposal to Convert Part-time to Full-time Appointments and Instructional Full-time Non-tenure track Appointments to Tenure Track Appointments**

### **A. Introduction**

Despite the sweeping changes transforming Rutgers, the University's core asset is still faculty members and the work they perform. Faculty members facilitate the human relationships essential to quality instruction and innovative research. Knowledge has a social life and, along with students, the faculty are the primary actors animating the educational process and modeling a love of learning and inquiry.

Yet, the Rutgers' faculty has been fundamentally transformed in ways that fragment the university community, disrupting learning and research. Contingent appointments now outnumber tenure track appointments at Rutgers and a majority of all new full-time hires are off the tenure track. The percentage of tenured faculty at Rutgers has steadily decreased 1% per year (from 67% to 59%) over the past nine years.\* (See Appendix A)

Part-time Lecturers, full-time non-tenure track Instructors and TAs teach more than half of all undergraduate classes. Non-tenure track Researchers, GAs, and Post-Doctoral Fellows are crucial to our research mission. The nationwide transformation of faculty roles has been comprehensively documented by Jack H. Schuster and Martin J. Finkelstein in, *The American Faculty: the Restructuring of Academic Work and Careers*.

While the national problem has been clearly stated, local solutions remain tentative. Successful efforts to address this problem have typically taken a dual approach. The first is to improve working conditions for contingent faculty (including longer terms of appointment, due process, and better compensation) and we have made a beginning of this at Rutgers for some contingent faculty. The second is to increase the ratio of full-time and/or tenured appointments. This proposal suggests that initial efforts to rebalance the proportion of full and tenure bearing appointments should focus on a) converting part-time appointments to full-time appointments and b) converting contingent full-time appointments to tenure-track appointments.

This document focuses on the ways that increasing contingency may be addressed at Rutgers, to make the case for more durable and productive relationships between Rutgers and its faculty through proposing some practical, achievable, and cost effective means of restoring a more full-time and tenure track faculty at Rutgers.

### **B. Reducing Contingency and Professionalizing Instruction Will Enhance Undergraduate Education at Rutgers**

A more professional, stable and less contingent faculty would allow Rutgers to address problems with undergraduate education and improve the way that students, alumni, faculty and the public perceive Rutgers.

---

\* Rutgers Office of Institutional Research and Academic Planning, 2005-2006 Rutgers Fact Book, 23 April 2006  
Retrieved from <http://oirap.rutgers.edu/instchar/factpdf/facstf05.pdf>

Rutgers now withholds any serious commitment to a near majority of its faculty and in so doing sets a bad example that invites doubt as to our commitment to education and research. The policy of reliance on a body of contingent faculty that are treated as second class citizens lowers morale and threatens quality by promoting disengagement and indifference.\* Instead, the relationships between instructors and Rutgers should reflect the idea that a sense of community and dedication are among the driving values of the academic community.

Professionalizing instruction promises to be an effective remedy because it enhances the student-teacher relationship by addressing the institutional and systemic obstacles to excellence created by overuse and abuse of contingent faculty.†

There is a lingering question regarding the quality of instruction offered by faculty in contingent relationships with the university. This question is unresolved by current research and is likely to remain so for the foreseeable future. Some studies suggest that contingent instructors are as effective as tenure track faculty involved in research despite systematic obstacles. Other research finds that significant educational deficiencies arise when institutions rely too heavily on contingent faculty.‡

The lack of a definitive answer to the question of how increasing contingency impacts quality education is rooted in characteristics common to contingent labor systems: they resist inquiry, evaluation and accountability and tend to increase the variability of the service or product. Contingency may make systems more managerially flexible in regard to current circumstances but the same flexibility makes the quality of the service more vulnerable to a host of unknown and unpredictable factors. For example: How does the lack of health care for PTLs impact the quality of instruction? That depends on the health of the individual and the nature of their health problems, their legal status as a spouse or partner of someone who may have family coverage, the income and additional employment of the individual. It also depends upon the health of the students involved and the current disease environment.

If, however, we turn our attention from the micro level of individual instructors and students to the macro level of institutional policy and culture, the increasing reliance on

---

\* Recent research strongly suggests that contingent employees reflect back the lack of commitment made by their employers. See Connelly C.E., & Gallagher, D. G "Emerging Trends in Contingent Work Research" *Journal of Management*, 30 (6) 2004, 959-983 and Liden et al., "The dual commitments of contingent workers: An examination of contingents' commitment to the agency and the organization." *Journal of Organizational Behavior*, 24 2003, 609-625.

† For a recent summary of the pervasive overuse and exploitation of contingent Faculty see Monica F. Jacobs, "Contingent Faculty Across the Disciplines," *Academe*, November 2006. Research on contingency by various Disciplinary Associations can be found at: <http://www.aaup.org/AAUP/pubsres/academe/2006/ND/Feat/sidebar2.htm>

‡ Umbach Paul D., How Effective Are They? Exploring the Impact of Contingent Faculty on Undergraduate Education. *The Review of Higher Education* 30.2 (2006)

Ehrenberg, R. G., & Zhang, L. (2005). Do tenured and tenure-track faculty matter? *Journal of Human Resources*, 40(4), 647-659.

Ernst Benjamin (Ed.), *Exploring the Role of Contingent Instructional Staff in Undergraduate Learning*, No. 123 Fall (2003) San Francisco: Jossey-Bass.

*Peer Review*, Contingent Faculty and Student Learning, Fall 2002 Vol. 5 No 1

contingent faculty and the unprofessional working conditions under which they labor have observable and important consequences for the quality of education and research.

While lack of professional salaries, benefits, office space, access to university resources and other sub-standard working conditions presents obstacles to excellence, the most pernicious effects of contingency are to be found in the contingent relationship itself.

- The labor-intensive and highly skilled nature of faculty work is ill-suited to precarious working conditions because uncertainty acts as a powerful disincentive inhibiting the full commitment of time, energy and expertise to the educational mission.
- Excellence in the classroom--the kind of excellence based on ideas and innovation--has been strongly linked to systems of shared governance in which the opinions and experience of faculty members are central to the development of curriculum and other academic policies. The University Senate and New Brunswick Faculty Council regularly make recommendations for evaluating teaching, establishing best practices, reforming curriculum, setting academic regulations and standards, and promoting, in collaboration with the Center for Teaching Advancement and Assessment Research, dialogue regarding teaching. Because contingency discourages involvement in governance, Rutgers forfeits an important source of knowledge and creativity.
- Contingency limits faculty involvement in non-class related activities, such as student life organizations or orientation for new students.
- Contingency results in divided loyalty and time because other jobs often become necessary and necessarily distract attention, cut into preparation time and reduce the possibilities of contact outside of the classroom.
- The resulting lack of familiarity with departmental culture and policy inhibits the advisory and mentoring capacity of contingent faculty. Contingent faculty are all too often out of the information loop.
- As the end of annual or semester contracts approach, it is reasonable to assume that contingent faculty members will experience increased stress as more time and attention is diverted away from teaching and research to securing a future position.
- Growing contingency and part-time work means that a significant proportion of Rutgers' faculty do not have health care insurance. In times of emergency, this health and safety risk may present a serious health hazard to Rutgers' students and employees exposing Rutgers to possible legal and financial liability.
- Contingency weakens the time-tested link between research and teaching. While quality undergraduate teaching may not require direct involvement in research, the heavy course load or multiple employments of many instructors and lecturers limits their ability to maintain currency in their field.

- The overuse of contingent appointments inhibits collegial interaction at the departmental level. Contingent faculty members are less able to engage in the formal and informal discussions regarding teaching techniques, texts, and emerging ideas in the field that characterize strong departments. Similarly, the physical and social dislocation created by contingency makes mentoring by senior colleagues the exception rather than the rule.

These ethical and pedagogical dilemmas are intensified and complicated by the fact that most contingent faculty mount heroic personal efforts to overcome Rutgers' policy and practice. It is unseemly for Rutgers to routinely expect self-sacrificing efforts from some of its lowest paid employees as they carry an increasing share of undergraduate education-- the very activity that the university community now agrees is a major focus vital to our reputation and our students.

**C. Reducing Contingency May Also Help to Build Our Endowment and Slow the Loss of Potential Students through Out-migration and Attrition.**

Professional reforms would benefit not only instructors and lecturers, but also students. Rutgers as an institution and the state in general would be strengthened by enriching the academic community through our superior ability to attract the very best instructors.

Reducing contingency could help increase the Rutgers University endowment, currently one of the lowest among comparable large state schools. The University of Michigan has an endowment 12.7 times that of Rutgers; The University of Virginia's fund is 5.66 times larger than Rutgers, Ohio State University enjoys an endowment 4.41 times that of Rutgers; University of Washington has 3.86 times our figure and the University of Delaware a considerable 2.59. (*U.S. News & World Report* see [www.usnews.com/ranking](http://www.usnews.com/ranking) presented in Appendix B).

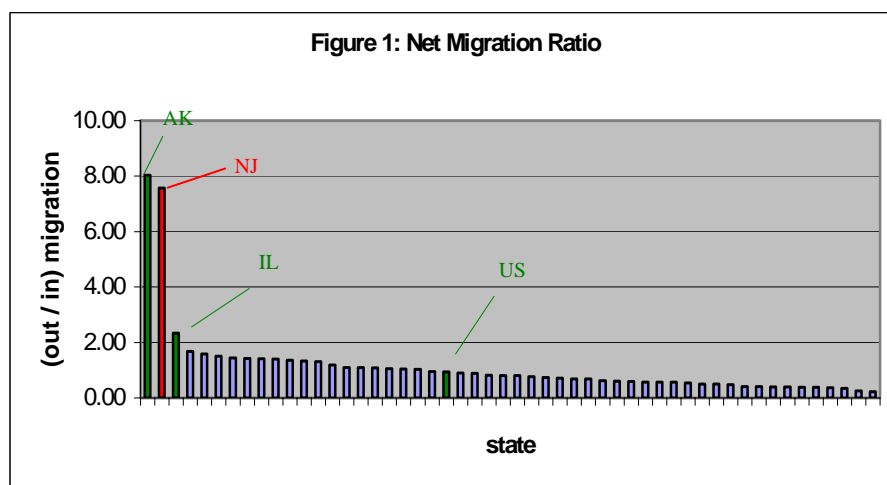
It is disturbing that despite Rutgers' standing as the oldest public institution among those ranked in the top 60, its endowment per alumni is lowest as is, tellingly, its percentage of full-time faculty. (For additional data on Rutgers' Endowment see Appendix B1)

Introducing more tenured and full-time positions would enhance future alumni loyalty and involvement by encouraging more enduring and rewarding faculty-alumni relationships. Since the student experience is the formative time for alumni attitudes, a stable and stellar teaching faculty can only improve social relations at Rutgers. Stronger bonds within the academic community are likely to counter the tendency many Rutgers' alumni have to forget their alma mater when it comes to charitable giving.

Student out-migration and attrition may also be improved by conversion programs. Out-migration needs to be reduced in order to "draw business and industry to New Jersey and retain them in the state" to benefit our colleges, employers, and the state's vitality (NJ Commission on Higher Education). New Jersey has the nation's second highest net migration ratio (number of NJ students leaving over the number of NJ students staying) of high school graduates. 7.57 graduates leave the state in order to attend college for every student that stays. And the rate has been increasing. Our state is second only to Alaska's ratio of 8.03. This is compared to Illinois, the third highest,

with a ratio of 2.33, and the US average of 0.93 (US Department of Education). This is illustrated in Figure 1 below:

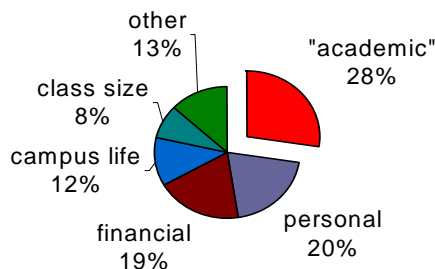
Data Source: U.S. Department of Education, National Center for Education Statistics, Integrated Postsecondary



Education Data System (IPEDS), Spring 2003. 17 April 2006.  
[http://nces.ed.gov/das/library/tables\\_listings/showTable2005.asp](http://nces.ed.gov/das/library/tables_listings/showTable2005.asp)

Migrating students also include those underclassmen who transfer out-of-state after first attending a New Jersey college or university. A more stable and professional teaching corps could lower the rate at which Rutgers' students drop out of the university. From the results of a multiple answer attrition study done by Rutgers' Office of Institutional Research, 56% of the students who left Rutgers said that they "transferred" to another college. Since the general response "transferred" does not specify why students left, it is excluded from the following analysis. Of the other reasons given, 28% of those said that they were "dissatisfied with the quality of teaching" or "academic performance", or "received inadequate academic support", or "the learning environment", or they "could not connect the classroom to the outside world" (Office of Institutional Research, "Rutgers Rising", 23, 29). If those responses can be grouped together as "academic", then they indicate that, for other than the general response of "transferred", a plurality of students left because of their academic experience in the classroom. (See Figure 2) Moreover, 97% of students who leave the university do so before their junior year. Thus, most of these students leave after only taking lower level courses, which are mostly taught by contingent faculty.



**Figure 2: Reasons for Leaving Rutgers**

Data Source: Rutgers Office of Institutional Research and Academic Planning, Rutgers Rising to the Challenge: The Undergraduate Experience, 1997, 30 April 30 2006.

[http://oirap.rutgers.edu/surveys/unexp/atrit\\_app.pdf](http://oirap.rutgers.edu/surveys/unexp/atrit_app.pdf)

#### **D. The (Re) balancing Act**

The following recommendations are achievable, practical and cost effective. They can be adopted with minimal costs to the university while providing maximum benefits to our teaching and research mission.

##### **1. Proposal for Tenure Track Teaching Appointments (TTT)**

Full-time TTT appointments could be created by converting the excellent and experienced instructors and lecturers currently serving in contingent positions into tenure eligible faculty members and by recruiting faculty with proven and promising teaching abilities. TTT faculty workloads would be determined by the department or unit in accordance with collective agreement. TTT faculty would be periodically reviewed and considered for promotion and tenure using a process parallel to the existing one but with different criteria specific to their appointments. Promotion criteria should give primacy to the quality of teaching and dedication to undergraduate education. Service in departmental and university governance regarding curricular reform, educational policy and standards should also carry considerable weight. Finally, scholarship on teaching methodology, curricular development, pedagogical practice and theory should be encouraged. In addition to teaching, TTT faculty may be assigned to other academic duties such as: advising of students, administrative tasks, curricular development, lab supervision, libraries, and research.

TTT appointments would add enormous value to Rutgers University by enhancing the coherence and continuity of undergraduate education and curriculum. A body of seasoned, professional, and tenured full-time instructors would significantly improve the sense of belonging and commitment to the academic community for both faculty and students.

## 2. Proposal for converting part-time faculty to full-time faculty

Part-time faculty members are generally employed, with modest salaries and no health benefits, to cover core introductory courses or they are hired to provide highly specialized expertise in certain narrow subject areas. Those in the first grouping might be the target of conversion proposals that aim to enhance undergraduate education by replacing contingency and lack of commitment with stability and continuity. In the context of such a transition, faculty members who have served many years in contingent appointments should have the option of continuing in the same position, with the same qualifications and responsibilities. Some part-time appointments, particularly of specialists and professional practitioners, may be appropriate to continue over a long term. In such cases, tenure eligibility for the part-time position, with proportionate compensation, should be considered.

When there are many part-time faculty members teaching year after year in a department, two considerations emerge: 1) Why many when fewer would do? and 2) Why contingent when the need continues so consistently? A larger pool of teachers only adds to the University's administrative burden with no parallel increase in reputation or prestige. To address these concerns, a system to convert part-time lecturer appointments to full-time appointments would be beneficial.

In accordance with the instructional needs of the department, a department with more than ten [or some reasonable number] part-time lecturers should convert those appointments beyond ten to full-time appointments over the next five years. For example, if there are generally 40 PTLs in a department, then two or three full-time appointments should be added each year until the ten PTL limit is achieved. Relying on attrition and voluntary terminations to achieve this goal would ease any disruption to departmental continuity.

Experienced PTLs who have been teaching the relevant courses should be first in line for these new appointments, with the employee option to remain part-time if positions exist. Full-time appointment brings more attentive instruction, advising and mentoring for students while faculty members gain basic necessities, such as health coverage. With a conversion plan, the same experienced and tested teachers would be in place as before, but with more informed and stable relationships to the University.

Programs for part-time to full-time conversion at other universities have demonstrated that such transitions can be successfully and economically accomplished with a gradual, well thought out plan. (Note the experience at Georgia State and University of Indiana in Appendix C) At Rutgers, students would benefit from the stabilized teaching force, some part-timers would gain more reliable careers, and the University would profit from a reduced administrative burden and the pride of implementing a positive transformation toward a higher quality education.

### E. Benefits of Conversion to the University

- Revitalizing faculty–student relationships should improve Rutgers University's ranking according to four of the nine *U. S. News and World Report* ranking

criteria: “average freshman retention rate”, “graduation rate”, “faculty who are full time”, and “average alumni giving rate”.\*

- TTT appointments would give Rutgers a competitive edge in undergraduate education. The prospect and award of tenure would attract and retain the most talented and committed teaching faculty. Tenure review would serve as the best possible quality control for instruction.
- Ranking of the U.S. Academic Institutions is heavily based on the percentage of faculty who are full-time (see for example the *US News & World Report*, the main source of academic data for prospective students and their parents, See Appendix B).
- TTT faculty can consistently release active faculty from teaching one course per year and make their research more efficient and productive increasing research labor capacity. The more research active departments are, the more they will benefit from TTT lines and such appointments will facilitate research activity in general.
- TTT and full-time faculty would assist Chairs and Graduate Directors in administrative tasks, providing release time for chairs and graduate directors to perform research and improve graduate studies.
- TTT can build rich and lasting academic relationships with students from the student’s first year at the Rutgers University. \
- TTT can serve as long-term mentors and student advisors for a broad range of courses on a regular basis. Improved student-faculty relationships will certainly help reverse the culture of complaint commonly expressed as “The RU Screw”.
- TTT faculty members can serve as Undergraduate Directors being able to fully dedicate their time to the student undergraduate education and to advise students about graduate schools and their careers.
- TTT and full-time faculty members may also serve as tutors to help students having difficulties maintaining good academic standing thereby reducing the drop-out rate from the university (another criterion for ranking, “average freshman retention rate” according to the *U.S. News & World Report*) and increasing the student graduation rate.

---

\* Peer assessment score  
 Average freshmen retention rate  
 2005 graduation rate  
 Faculty resources rank  
 % of classes with 50 or more (2005)  
 % faculty who are full-time (2005)  
 SAT/ACT 25th-75th percentile (2005)  
 Acceptance rate (2005)  
 Alumni giving rank (NOTE ENDOWMENT IS ALSO A RANKING FACTOR)

- Conversion programs resulting in more tenured and full-time instructors would bring Rutgers national recognition as an innovator in undergraduate education by eliminating the covert yet powerful message we send to students that undergraduate education is unworthy activity suited to a second class faculty. (See Appendix D for a schematic summarizing the potential benefits provided by this proposal)

## F. Costs

### 1. The Costs of Converting PTL Appointments to Full-Time Instructor Appointments (FTI), Assuming a Base Salary of \$50,000, is Largely Self-funding.

- **Money Available from existing PTL Funds**

A significant portion of the costs of converting to full-time appointments can be accounted for from the cost previously paid to PTLs. The following example provides a reasonable estimate even given the understanding that teaching loads vary by department. If one FTI faculty teaches 8 courses, which at a current rate of compensation is \$1,200 per credit or \$3,600 per course, that amounts to \$28,800. Since it is expected that the new contract will increase a PTL pay per course by at least \$30 per credit, we will work with \$4,000 per course, or \$32,000 per PTL faculty teaching eight courses.

In addition to \$32,000, the University pays 6% to the Social Security fund (\$1,920) and 1.5% for the Medicare cost (\$480) bringing the total amount to **\$34,400**. In some cases, for PTLs that qualify based on the years of service, Rutgers University pays 6.5% contribution to the retirement plan (PERS) and the Life and Disability insurance. Our calculations will not include these additional Rutgers contributions since they are not paid to all PTLs. Additionally, we assume that all full-time faculty will receive the family coverage for Medical, Drug Prescription, Dental plans, which is not always the case. Consequently, our calculations, for this example, are conservative.

- **Benefits Cost per Faculty**

\$13,163 Medical Plan (Family coverage)  
 \$4,000 Pension (8% of the base salary)  
 \$3,341 Prescription Drug (Family coverage)  
 \$3,000 Social Security (6%)  
 \$1,448 Life and Disability Insurance  
 \$750 Medicare (1.5%)  
 \$705 Dental Insurance (Family Coverage)  
**\$26,407 Total Benefits**

Thus, \$26,407 + \$50,000 =  
**\$76,407 TOTAL UNIVERSITY COST PER FTI LINE**

- **Funding Needed to Support a FTI Appointment**

If we subtract the \$32,000 already allotted for PTL salary and the \$1,920 and \$480 already paid to Social Security and Medicare on PTL payroll from the \$76,407 total needed to support an FTI line at a salary of \$50,000 that leaves \$42,007. ( $\$76,407 - \$32,000 - \$1,920 - \$480 = \$42,007$ )

- **Funding Sources**

The university can generate the remaining \$42,007 by the increased productivity of its tenure track research active faculty.

- In a funded research active Department in the Sciences a faculty member brings in average at least \$100,000 per year. One FTI devoted to teaching will relieve eight research active faculty of one course per year. Assume that this newly added time will increase the grant activity of the faculty by 12.5%. That is, they will be able to generate (eight of them) an additional \$100,000 per year. The overhead on \$100,000 is approximately \$40,000, (depending on local arrangements). FTI faculty lines in research active departments can be fully funded from existing PTL funding and the overhead return from grants generated from the additional time realized by research active full-time and tenure track faculty.
- In Departments where granting agencies provide lower levels of funding, FTI lines may be supplemented from the interest money generated by an increase in the Rutgers University endowment. The use of tenured and long-term full-time faculty in advising and mentoring students will build a closer relationship between the University and its students and indirectly generate more contributions to its endowment. Interest from the endowment may be used by the University for almost any need including the creation of more full-time lines. The following two examples illustrate the range of possible benefits to the endowment that may be derived due to an increase in FTI.

Based on the *US News & World Report* data, the better ranked schools have larger endowments and larger proportions of full-time faculty. Specifically, the endowment is inversely proportional to the rank, which can be calculated from this equation: (increased endowment) =  $4.875 \times (\text{each added FTI}) - 21.822$ , [with  $R^2 = 0.98$ ]. According to the equation, the increase in the endowment per *each* added FTI is never less than 1.6 million dollars. That is:

\$1,600,000	minimum increase in calculated endowment
<u>-\$42,007</u>	increased salary + benefits for PTL → FTI conversion
\$1,557,993	surplus revenue per each FTI added

Or, one may assume that the implementation of FTI lines will generate a 1% per year increase in Rutgers' endowment (now roughly equal to \$400 million). The interest on that 1%, at an APR of 3.75%, and after taxes, is around \$150,000.

That amount is sufficient to fully fund each added FTI line. That is:

\$150,000	interest on 1% increase in endowment
<u>-\$42,007</u>	increased salary + benefits for PTL → FTI conversion
\$67,993	surplus revenue per each FTI added

In either example, there is a surplus of revenue for each FTI faculty added.

- c. The US News data also indicates an expected increase in retention as a consequence of increasing the proportion of full-time faculty, thus more tuition and fees paid to the University. Since Rutgers is the source of \$2.8 billion in direct and indirect spending that is channeled into the New Jersey economy each year—more than five times the state’s annual investment in Rutgers, the State will also benefit from the efficiencies that will likely accompany the increased use of FTI.

## **2. Cost of Converting Full-time Non-tenure Track Appointments to Teaching Tenure Track Appointments (TTT).**

The costs of conversion to (TTT) represent an appropriate investment in undergraduate education. Converting full-time non-tenure track positions to tenurable positions represents a modest increase in expenditures, as the compensation for TTT appointments could be only marginally more for existing NTT instructors and lecturers. Incremental budget increases may be sufficient to accommodate a conversion from contingency to stability. (See the examples at California State University and Western Michigan University in Appendix E)

Even these limited costs are offset somewhat by the diminished administrative expense of handling high turnover among faculty teaching essential courses and reducing, if not eliminating, the costs of faculty searches. Faculty searches cost on average \$2,500 per candidate and by converting the proven instructors already at Rutgers an immediate savings would be realized.

## **3. General Cost Benefit Analysis of Conversion Proposal (see Appendix F)**

**APPENDIX A**

**THE DECLINE OF TENURE AT RUTGERS**

Rutgers, The State University of New Jersey

FACULTY/STAFF

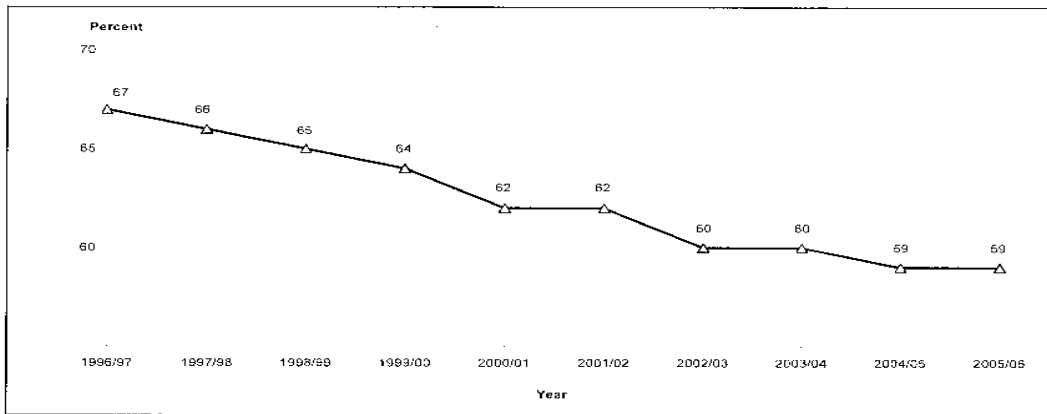
*Percent Tenured Faculty by Campus  
1996/1997 - 2005/2006*

	CAMDEN	NEWARK	NEW BRUNSWICK	TOTAL
1996/97	64	64	68	67
1997/98	63	64	67	66
1998/99	66	65	65	65
1999/00	66	62	63	64
2000/01	64	61	62	62
2001/02	64	61	62	62
2002/03	62	60	60	60
2003/04	63	59	60	60
2004/05	62	58	59	59
2005/06	63	55	59	59

Source: IPEDS 2005 Fall Staff Survey

Office of Institutional Research

*Percent Tenured Faculty for Total University  
1996/1997 - 2005/2006*



Source: IPEDS 2005 Fall Staff Survey

Office of Institutional Research

Rutgers, The State University of New Jersey

FACULTY/STAFF

## APPENDIX B p.1

### U. S. Public Schools Endowment

Data Source: U.S. News & World Report, *Best National Universities*, 28 August 2006, Retrieved from <http://www.usnews.com/sections/education/index.html>

Rank	School	Year founded	% full-time faculty ('05)	Undergrad enrollment	Endowment (millions)	calculated values from the data		
						Alumni per year	Total alumni	Endowment per alumni
21	UC Berkeley	1868	91	23,482	2,389	5,871	816,000	2928
24	U Michigan	1817	92	25,467	4,931	6,367	1,209,683	4076
24	U Virginia	1819	96	14,213	2,185	3,553	668,011	3271
26	UCLA	1919	90	24,811	1,849	6,203	545,842	3387
27	U North Carolina	1789	97	16,764	1,433	4,191	913,638	1568
34	U of Wisconsin	1848	92	30,106	325	7,527	1,196,714	272
38	Georgia Tech	1885	94	11,841	263	2,960	361,151	728
38	UC San Diego	1960	99	20,679	474	5,170	242,978	1951
41	U Illinois	1867	94	30,909	823	7,727	1,081,815	761
42	U Washington	1861	93	27,488	1,493	6,872	1,003,312	1488
44	UC Irvine	1965	91	19,930	263	4,983	209,265	1257
47	Penn State	1885	99	34,637	862	8,659	1,056,429	816
47	U Florida	1853	96	34,612	730	8,653	1,332,562	548
47	UC Santa Barbara	1909	97	18,077	227	4,519	442,887	513
47	UT Austin	1883	95	36,878	2,264	9,220	1,143,218	1980
54	U Maryland	1856	90	25,373	335	6,343	957,831	350
57	Ohio State	1870	89	37,411	1,704	9,353	1,281,327	1330
57	U Pittsburgh	1787	89	17,024	1,525	4,256	936,320	1629
60	Purdue	1869	95	30,779	1312	7,695	1,061,876	1236
60	Rutgers - NB	1766	87	26,713	386	6,678	1,609,458	240

#### Notes:

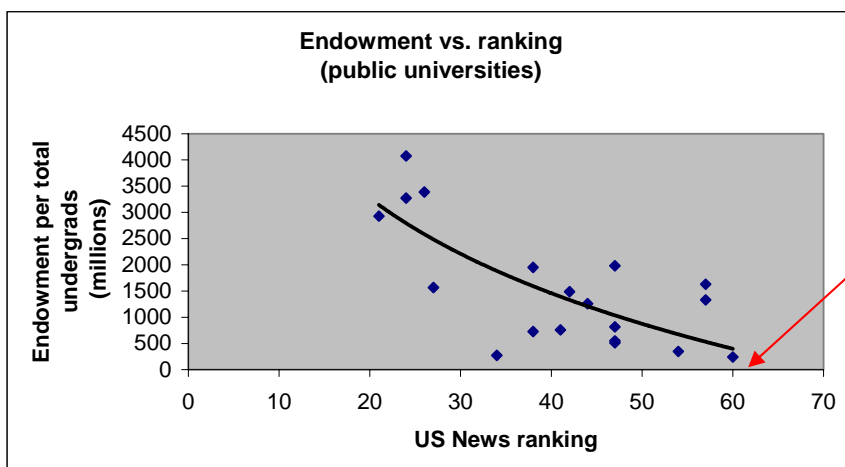
This table includes all *public* universities ranked in the top 60 by U. S. News & World Report. The remaining schools in the top sixty are *private* schools (not shown).

#### Calculated values from the data:

$Alumni\ per\ year = Undergrad\ enrollment / 4\ years$

$Total\ alumni = Alumni\ per\ year \times age\ of\ school$

$Endowment\ per\ alumni = Endowment / Total\ alumni$

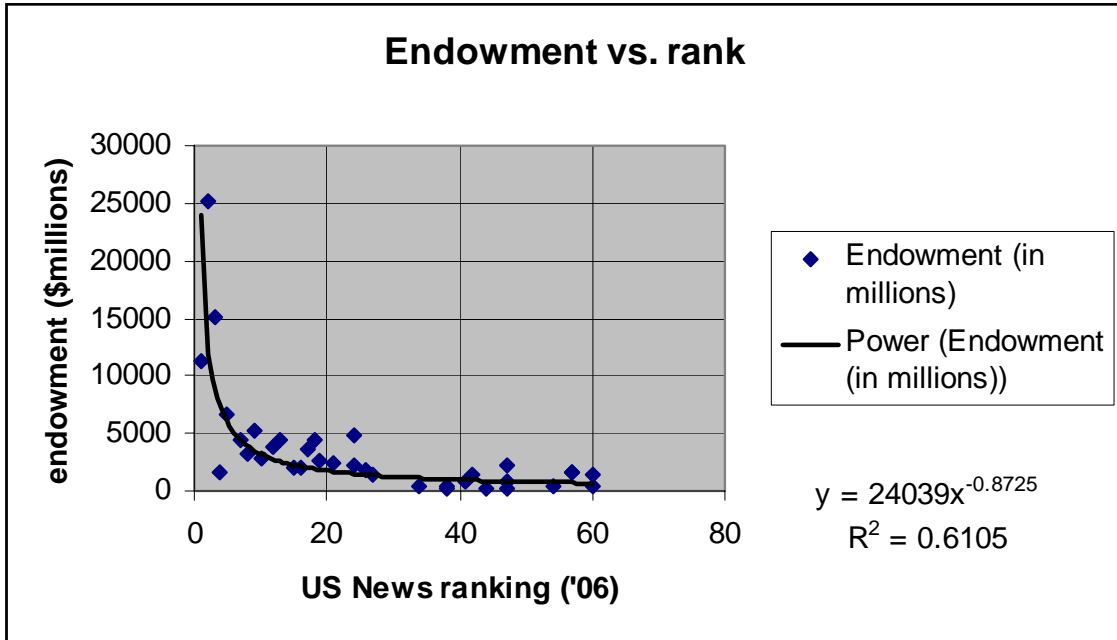


At a rank of 60,  
RU has lowest  
%FT and lowest  
endowment per  
alumni



**APPENDIX B p.2**  
**Endowment Analysis**

Endowment for public and private schools as functions of rank  
It is modeled as endowment =  $k / \text{rank}$



## APPENDIX C

### **Best Practices and policy initiatives relating to conversion and professionalization of instructional faculty**

See <http://face.aft.org/> for ongoing legislative initiatives aiming at converting part-time to full-time, maintaining 75% FT:PT faculty ratios, pro-rata compensation, etc.

### **Examples of programs that include the conversion of Part-Time to Full-Time Faculty:**

#### Georgia State University (1999) [IHE]

At Georgia State University, between 1999 and 2006, full-time faculty numbers were increased by over 20% with more than a 5% increase in tenure track and a near doubling of full-time non-tenure track appointments. Part-time faculty were reduced by almost half. Basically, existing part-timers were converted to full-time non-tenure track positions along with a gradual small increment of additional tenure track faculty. Although more growth on the tenure track than off would be preferable, this approach can be a step in that direction if part of a two-prong approach: increase tenure track lines along with converting part-time to full-time non-tenure track.

<http://insidehighered.com/news/2006/12/12/gsu>

1999	→	2006	
710		755	TT
160		303	FT NTT
306		180	PT

#### Indiana University (2002) (2001-2003)

Another example of successful conversion of part-time to full-time occurred at Indiana University. Here a full-time non-tenure track “career path” was created to reduce reliance on part-time / adjunct faculty. These teaching-only positions receive multiple year appointments with annual review, and an opportunity for promotion. Teaching-only faculty members are without tenure and only participate in governance as determined by the academic unit. These new appointments were “phased-in” over a period of years, at approximately 50-60 a year system wide. In this case, fiscal necessity prevented the further addition of tenure track faculty, which all admit would have been desirable.

The following is password protected:

“Full-Time, Non-Tenure Track Appointments: A Case Study” by Myles Brand  
<http://web.ebscohost.com.proxy.libraries.rutgers.edu/ehost/pdf?vid=3&hid=2&sid=069e4280-bdbd-4e75-8d4e-8f77e6e7cf3c%40sessionmgr7>

#### “Trustee Lecturer Initiative” (IUPUI)

[http://www.imir.iupui.edu/IUPUIfolio/teach/teach\\_iupuc.htm](http://www.imir.iupui.edu/IUPUIfolio/teach/teach_iupuc.htm)  
<http://www.iport.iupui.edu/iport/selfstudy/tl/teaching/EnsuringRewardsAndIncentives/>

#### University of Maryland – Baltimore County IHE, 3-6-06

Faculty Hiring Principles:

<http://www.umbc.edu/provost/planning/FacultyHiringPrinciplesAugust2004.pdf>

The above recommendations are based on a much longer August 2003, Report on the UMBC Faculty Size, Composition, and Allocation

<http://www.umbc.edu/provost/ReportonUMBCFacultyAugust2003.pdf>

Virginia Commonwealth University (scroll down to budget allocations)

<http://www.vcu.edu/president/speeches/convocation99.html>

Rhoades and Maitland: "More Than They Bargained For: Contingent Faculty" NEA 2006

<http://www2.nea.org/he/healma2k6/images/a06p65.pdf>

### **Examples of Conversion from Non-Tenure Track to Tenure Track Faculty:**

Western Michigan University converts some NTT to TT [CHE 1-03]

<http://chronicle.com/weekly/v49/i17/17a00801.htm>

University of Wisconsin – Madison

"Converting Academic Staff to Tenure Track at the UW – Madison: A viable Strategy?"

[http://wiseli.engr.wisc.edu/ADVANCE4/Panel5/UWMadison\\_Panel5\\_ExecSumm.pdf](http://wiseli.engr.wisc.edu/ADVANCE4/Panel5/UWMadison_Panel5_ExecSumm.pdf)

Syracuse University, Dec. 7, 2005

Report and Recommendations: Appointments and promotions for NTT (See chart of titles)

<http://universitysenate.syr.edu/academic/non-tenure-report.html>

University of Central Arkansas

Senate Recommends: <http://www.uca.edu/news/index.php?itemid=533>

Indiana University Northwest

<http://www.iun.edu/~facorg/meeting04/Summary%20of%20fac%20comp.doc>

MISC:

Financial Commitment to Tenure

<http://www.stanford.edu/dept/CTL/Tomprof/postings/424.html>

Study of Non-Tenure Track Faculty at AAU Institutions

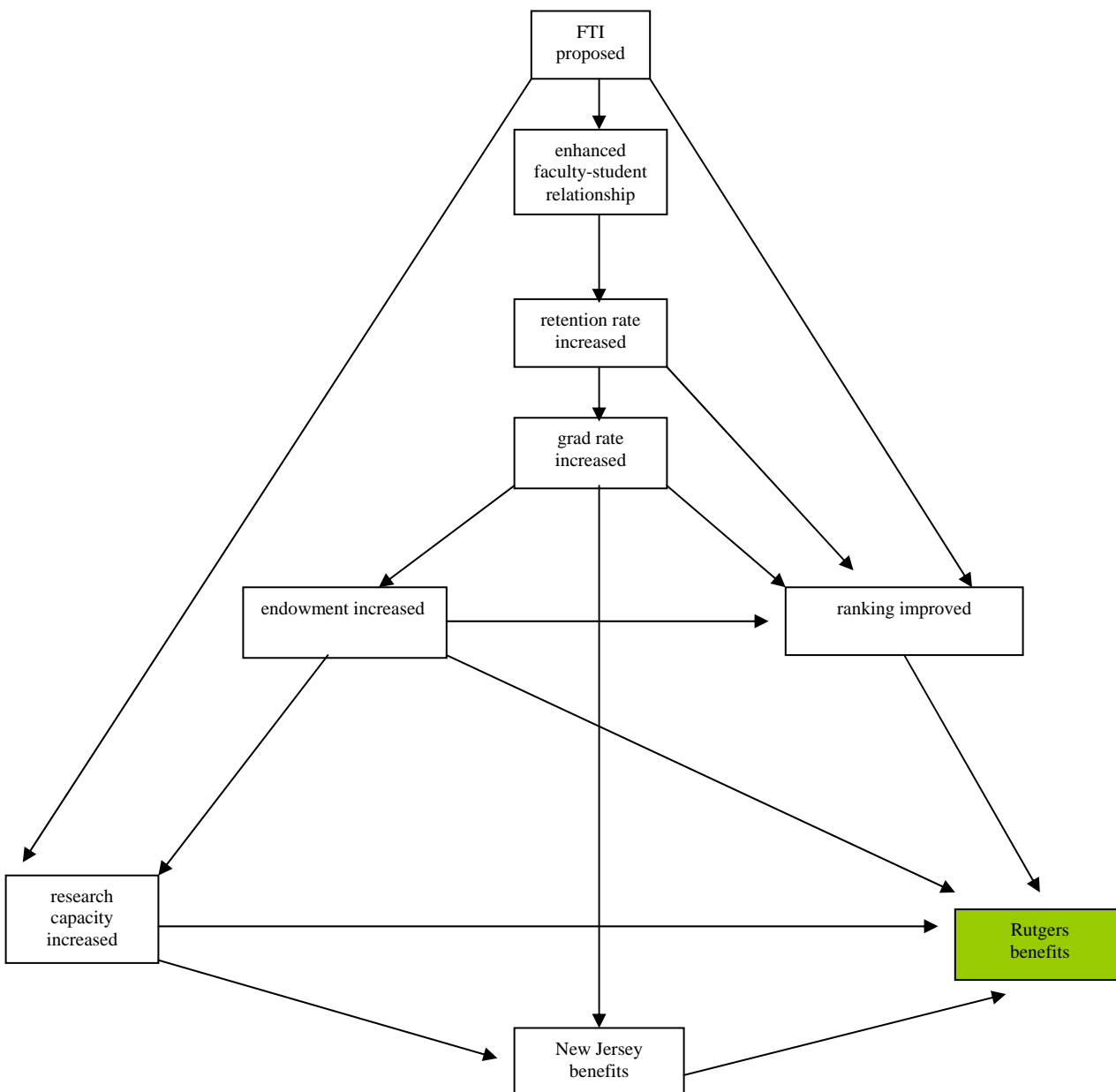
<http://www.aau.edu/reports/NonTenure4.01.pdf>

**APPENDIX D p.1**

**How the Proposal to Professionalize and Convert Part-time and Contingent Appointments Benefits Rutgers and New Jersey**

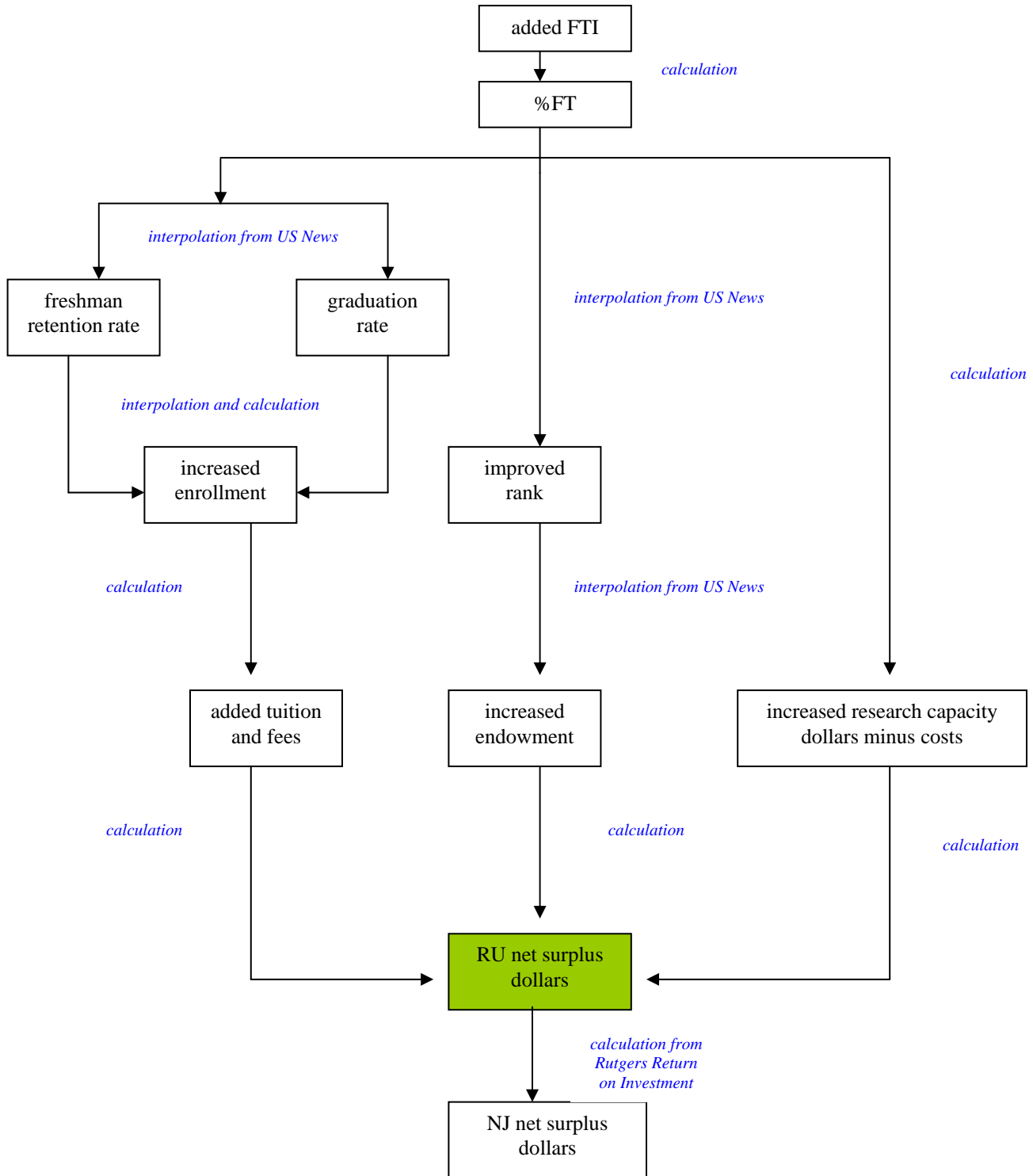
By increasing the complement of full-time faculty, the faculty-student relationship is enhanced. This will increase the freshman retention rate, and thus the graduation rate. These both reduce net-out migration from Rutgers and New Jersey, thereby increasing the University's endowment and supporting the State's vitality, and together improve the University's ranking. Research at the University is increased by FTI taking over more teaching burden, and by increased endowments, and by attracting world-class researchers, all consequently contributing further to the State's vitality. In turn, the State is more able to further contribute to Rutgers' growth.

This process is illustrated in the flow diagram below:



**APPENDIX D p.2**

**Benefits Calculation Flow Chart**



Data Source:  
 U.S. News & World Report, *Best National Universities*, 28 August 2006, Retrieved from <http://www.usnews.com/sections/education/index.html>  
 Department of University Relations, Rutgers University, 2004, *Rutgers Return on Investment: The Economic Benefits to the Citizens of New Jersey* Retrieved from [http://oirap.rutgers.edu/reports/ecom\\_imp/EIPrintable04.pdf](http://oirap.rutgers.edu/reports/ecom_imp/EIPrintable04.pdf)

## **APPENDIX E**

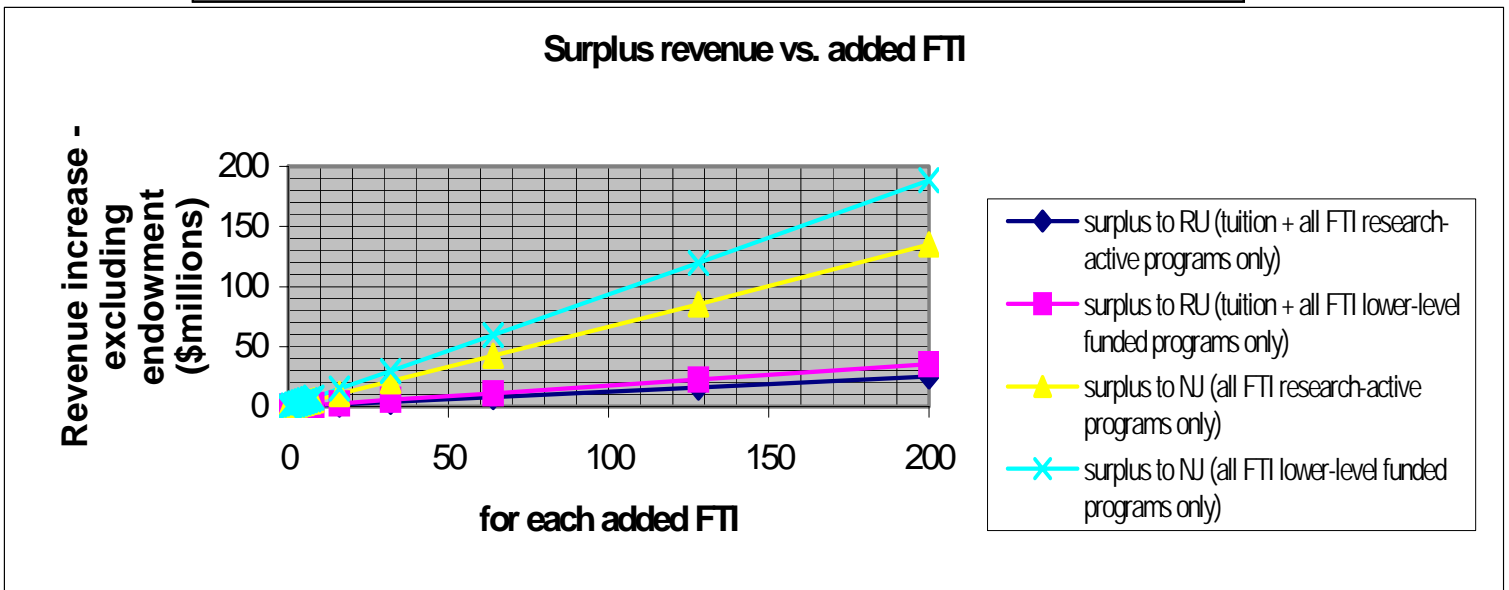
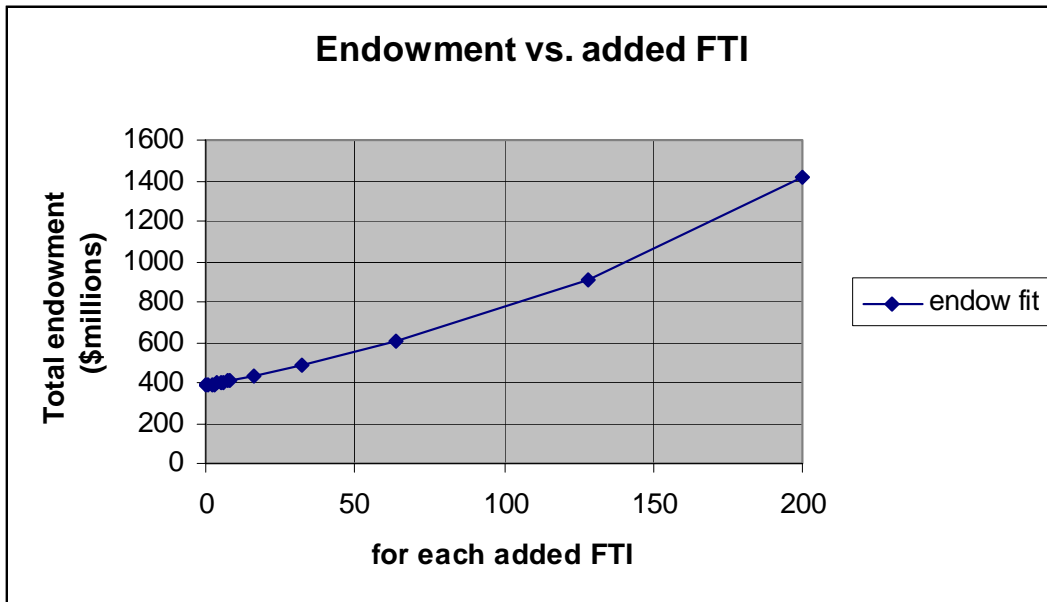
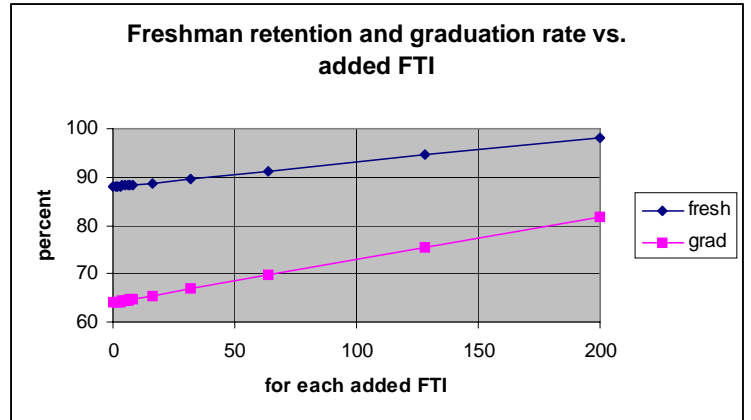
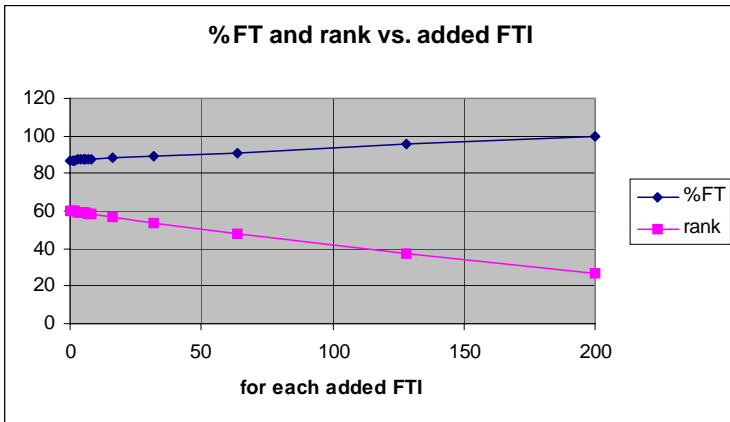
### Costs of Conversion Programs at CSU and WMU

In 2001, the California legislature passed a resolution to increase the percentage of tenured and tenure track faculty in the California State University system to 75 percent over an eight-year period. A system wide working group adopted a plan that outlined a goal of improving the ratio of tenured and tenure track faculty by 1.5 percent each year. The plan anticipated that many faculty holding non-tenure track lecturer positions would apply successfully for newly created tenure track positions, and that the remaining replacements of lecturer positions with tenure track positions could be handled through attrition and retirements of lecturers. To meet the goal, the state undertook to conduct between 1,800 and 2,000 annual searches for new tenure track faculty. The cost of recruiting, appointing, and compensating the new positions was estimated to be between \$4.8 and \$35 million in each of the eight years, which reflected an increase of 0.18 percent to 1.3 percent in the system wide budget. See Office of the Chancellor, California State University, "A Plan to Increase the Percentage of Tenured and Tenure Track Faculty in the California State University," July 2002. To put this figure in context, in the same year, CSU considered a system wide computer upgrade that would have cost \$160 million.

At Western Michigan University, the faculty successfully bargained for a contract that offered tenurable positions to a group of "faculty specialists" including health specialists and teachers in the College of Aviation. Because the faculty union and the institution had moved incrementally toward this step, first regularizing the positions by adopting position descriptions and promotional ranks and agreeing on some due process provisions, and then offering job security with four-year reviews, the cost of the transition to the tenure track was negligible. Information on Western Michigan University's contract is drawn from Gary Mathews, "Contract Issues Continue to Percolate and Brew," *WMU-AAUP Advocate* (October 2002); Piper Fogg, "Widening the Tenure Track," *Chronicle of Higher Education*, January 3, 2003; and Article 20 of the WMU-AAUP contract, WMU Web site at [www.wmu.edu/aaup/2002\\_2005\\_contract.pdf](http://www.wmu.edu/aaup/2002_2005_contract.pdf).

**APPENDIX F**

**Economic Benefits Results**



Dept\_with\_10\_or\_more\_PTLs

Campus	Dixision	Deaprtment	Count
COLLEGE AV	SAS	ENGLISH	50
COLLEGE AV	GRAD SCH OF ED		41
COLLEGE AV	SCH OF SOCIAL WORK		35
BUSCH	SAS	MATHEMATICS	34
NEWARK	FAS-N	FINE ARTS	24
CAMDEN	SCHOOL BUSINESS CAMD		23
NEWARK	COLLEGE OF NURSING		22
NEWARK	LAW SCHOOL - NEWARK		22
CAMDEN	LAW SCHOOL - CAMDEN	LAW	21
NEWARK	SCH-CRIMINAL JUSTICE	DEAN'S OFFICE	18
COLLEGE AV	S C I L S	COMMUNICATION	17
DOUGLASS	M G S A	THEATER ARTS	17
LIVINGSTON	SMLR	LABOR PROGRAM	17
CAMDEN	ARTS AND SCIEN-CAMD	MATHEMATICS	15
COLLEGE AV	S C I L S	LIBRARY&INFO STUDIES	15
DOUGLASS	SAS	SPANISH & PORTUGUESE	15
BUSCH	GRAD SCH-PROF PSYCH		14
COLLEGE AV	S C I L S	JOURN & MASS MEDIA	14
LIVINGSTON	SAS	SOCIOLOGY	14
CAMDEN	ARTS AND SCIEN-CAMD	ENGLISH	13
LIVINGSTON	SCH OF SOCIAL WORK	OPDR	13
NEWARK	FAS-N	WRITING PROGRAM	13
COLLEGE AV	EJB SCHOOL PLNG/PP	DEAN'S OFFICE	12
DOUGLASS	M G S A	MUSIC	12
LIVINGSTON	RUTGERS BUSINESS SCH	DEAN'S OFFICE	11
NEWARK	FAS-N	MATH + COMP SCIENCE	11
COLLEGE AV	SAS	ASIAN LANG & CULTURES	10
COLLEGE AV	SAS	ECONOMICS	10
COLLEGE AV	SAS	GER RUS EE LANG & LIT	10
COLLEGE AV	SAS	ITALIAN	10
NEWARK	FAS-N	P.A.L.S.	10





NEW BRUNSWICK FACULTY COUNCIL  
PERSONNEL POLICY COMMITTEE

**Report on the charge on numbers and trends of different faculty cohorts**

The Personnel Policy Committee (PPC) was charged to:

*Review and report on New Brunswick Campus statistics and trends related to the numbers of tenured and tenure-track faculty, PTL's, and TA/GA's.*

The PPC acquired data from the web site of the Rutgers Office for Institutional Research, requested further data from the same office on part-time faculty and received additional data on PTLs and TA/GAs from the payroll sheets via the AAUP. The PPC discussed the charge in two meetings on 2/13/07 and 3/1/07. This report was circulated to all PPC members before being submitted to the Executive Committee.

The data, as presented below, indicate to the PPC the following trends:

- The number of Professors (PI) seems stable after an initial jump that may be related with the elimination of mandatory retirement. Nevertheless, PI's exhibit a drop as a percentage of total faculty.
- The numbers of Associate (AO) and Assistant Professors (AI) also seem to exhibit a drop as a percentage of total faculty.
- The number of Part-time faculty (PTF) exhibits significant variation over the period of the last 9 years. At some point it was (barely) the largest contingent on campus, in a virtual tie with PI's. PTLs account for 81-86% of Part time faculty.
- The one unexpected trend is the almost monotonic increase of the number and percentage of Instructors / Assistant Instructors (IAI), who are not tenure-track. From 1988 to 2006 IAI's went from 6% to 17%, an increase of 11 percentage points apparently at the expense of AO's (-6 percentage points) and AI's (-4 percentage points). This is a disturbing trend. As a consequence, it seems as if we have lost 84 tenured and tenure track lines since 1988 in New Brunswick/Piscataway. On the other hand we have no way of calculating how many were converted to TA line.
- TA/GAs exhibit a definite upward trend with a gain of 172 (12%) since 1997 that peaked in 2003 and exhibit a continuous drop since then.

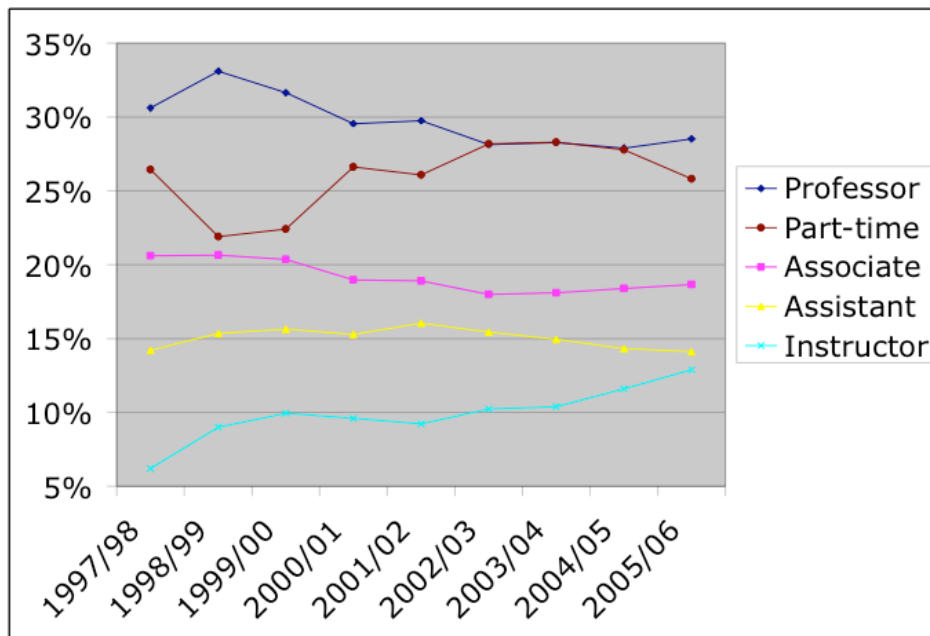
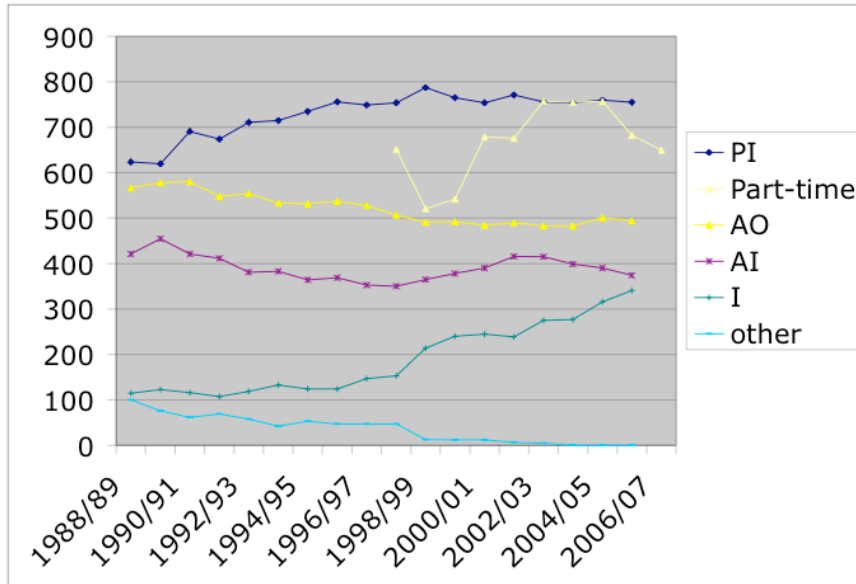


Figure 1: a: Number of faculty vs. Academic Year. PI: Professors, AO: Associate Professors, AI: Assistant Professors, I: Instructors/Assistant Instructors  
 b: as a percentage of total faculty. NOTE: PTLs account for 81-86% of Part time faculty.

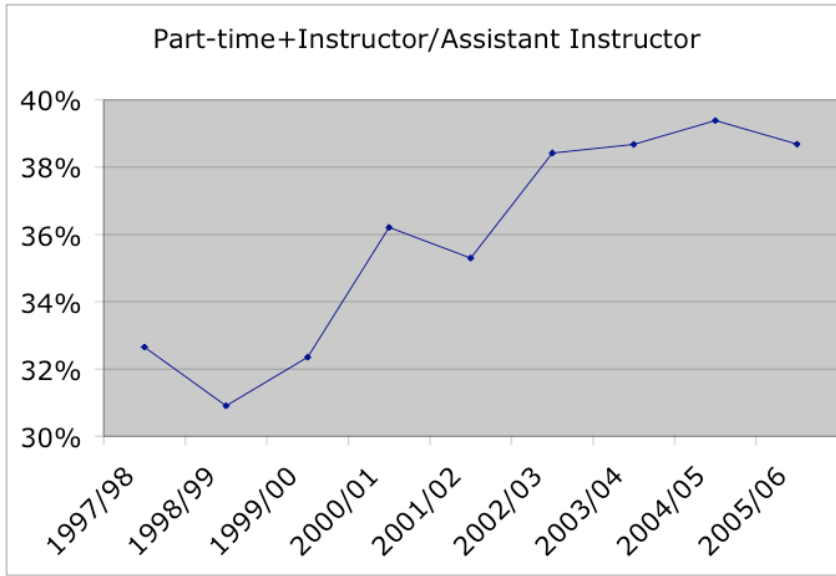


Figure 2: Aggregate Part-time and Instructor/Assistant Instructor percentage of total faculty vs. Academic Year.

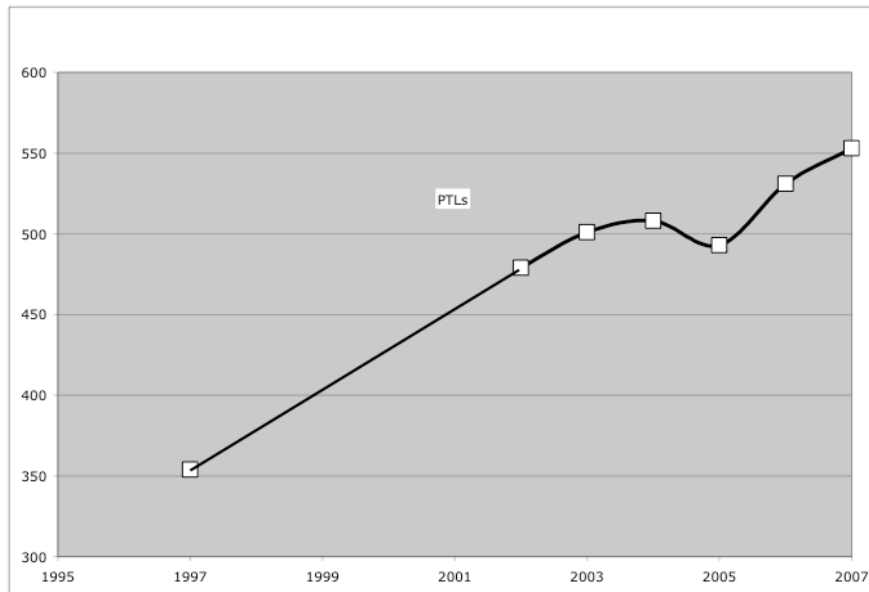


Figure 3: Absolute number of PTLs vs. Academic Year.

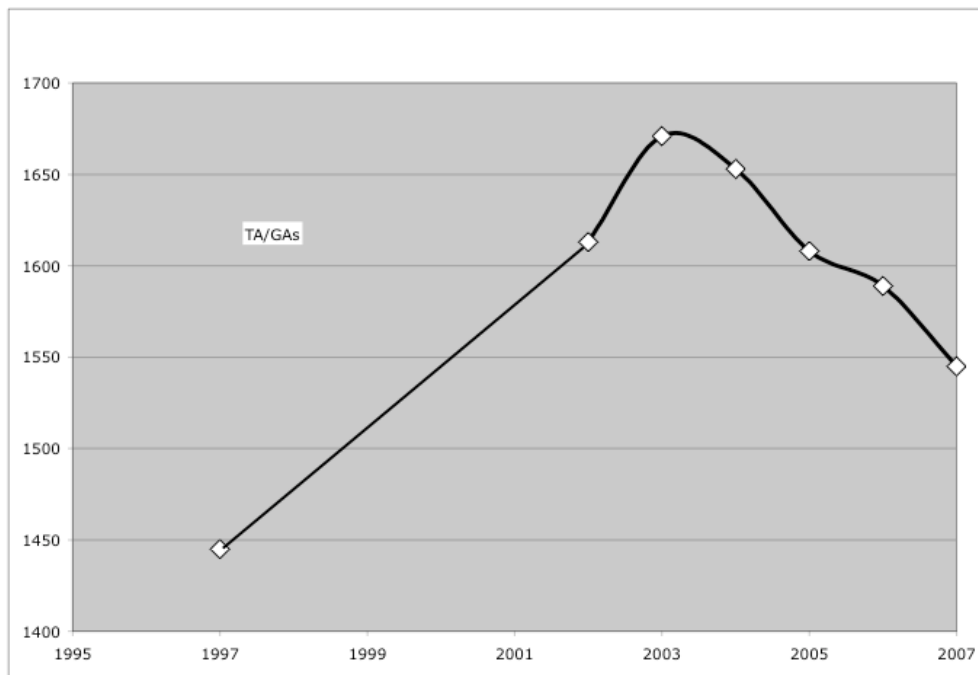


Figure 4: Absolute number of TA/GAs vs. Academic Year.

The Personnel Policy Committee 2006-07:

- Robert Boikess
- Christopher Brey
- Paul Panayotatos (Chair)
- Robert Parelius
- Frank Popper
- Saul Rubinstein
- Paul Schalow
- Randall Schuler
- Karen Thompson
- Lionel Tiger
- Ming Xu