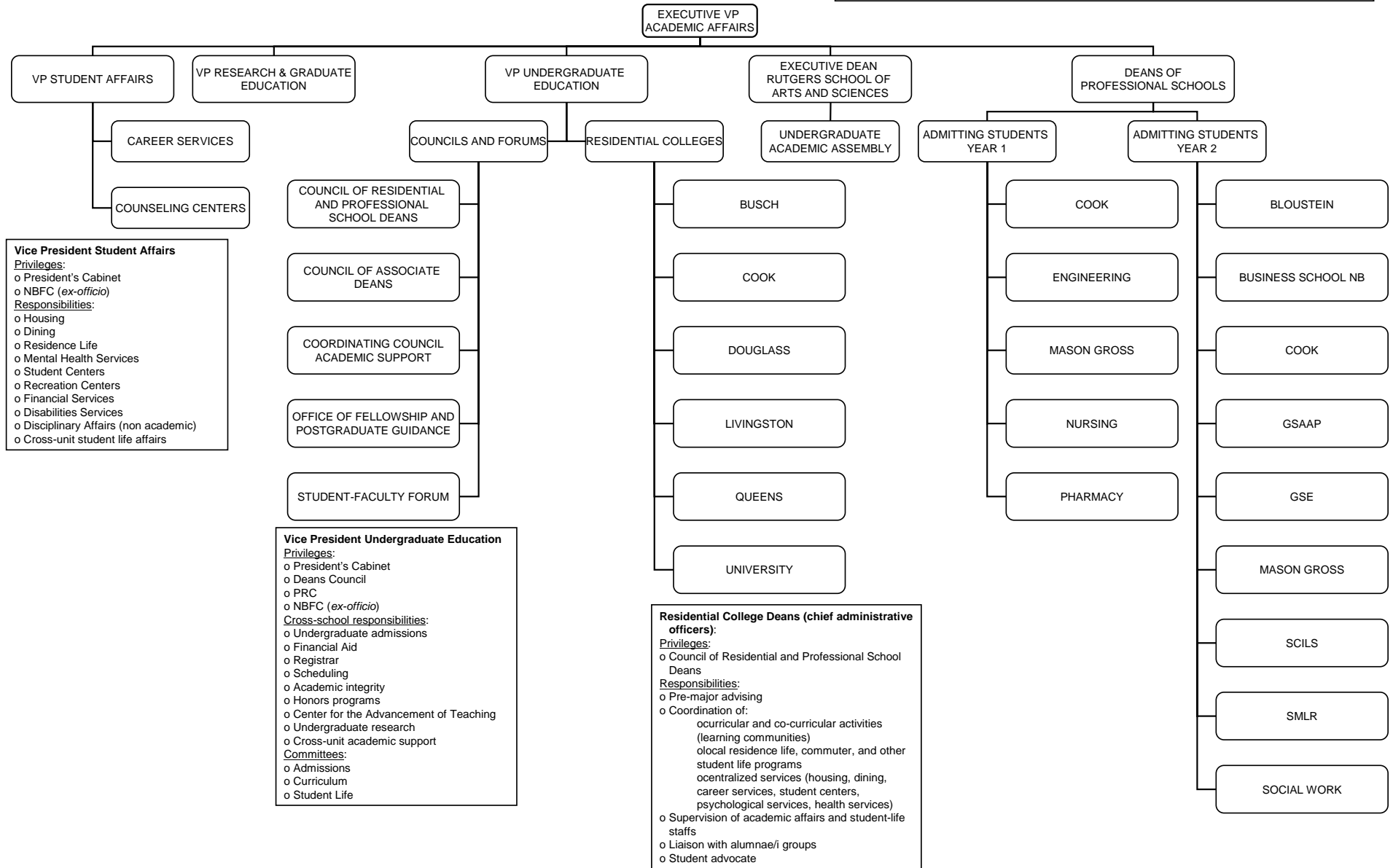


Appendix E.  
 DRAFT Organizational structure as pertains to the report of the Task Force on  
 Undergraduate Education  
 Faculty Affairs and Personnel Committee, January, 2006

**Notes:**

- o A "dotted line" relationship is expected between career services/counseling centers and the VPUE/VP R&GE where appropriate
- o A "dotted line" relationship is expected regarding honors programs, the Center for the Advancement of Teaching, and Undergraduate Research between the Dean of the School of Arts and Sciences and the VPUE
- o Cook College is considered both a residential campus and a professional school, admitting students to majors both first year and later
- o Mason Gross will admit students to majors both first year (BFA) and later (BA)
- o Douglass College will maintain a curricular component at some level



**Vice President Student Affairs**  
**Privileges:**

- o President's Cabinet
- o NBFC (ex-officio)

**Responsibilities:**

- o Housing
- o Dining
- o Residence Life
- o Mental Health Services
- o Student Centers
- o Recreation Centers
- o Financial Services
- o Disabilities Services
- o Disciplinary Affairs (non academic)
- o Cross-unit student life affairs

**Vice President Undergraduate Education**  
**Privileges:**

- o President's Cabinet
- o Deans Council
- o PRC
- o NBFC (ex-officio)

**Cross-school responsibilities:**

- o Undergraduate admissions
- o Financial Aid
- o Registrar
- o Scheduling
- o Academic integrity
- o Honors programs
- o Center for the Advancement of Teaching
- o Undergraduate research
- o Cross-unit academic support

**Committees:**

- o Admissions
- o Curriculum
- o Student Life

**Residential College Deans (chief administrative officers):**  
**Privileges:**

- o Council of Residential and Professional School Deans

**Responsibilities:**

- o Pre-major advising
- o Coordination of:
  - o occurrucular and co-curricular activities (learning communities)
  - o local residence life, commuter, and other student life programs
  - o centralized services (housing, dining, career services, student centers, psychological services, health services)
- o Supervision of academic affairs and student-life staffs
- o Liaison with alumnae/i groups
- o Student advocate